



# Virginia Healthcare Workforce Briefs

Indicators from the Bureau of Labor Statistics'  
Current Employment Statistics Survey  
**Series 2: Regional & Sectoral Employment**

Series 2, Issue 139

October 2023

## Inside this Brief:

Regional Employment	2
Regional Employment Growth	2
Subsector Employment	3
Subsector Employment Growth	4
Region Map	5
About the Data	6

*Data in this report are not seasonally adjusted. Self-employed persons, including health professionals in private practice, are not included.*

## Highlights

- ◆ Data in this series are not seasonally adjusted and exhibit short-term volatility from fluctuations in holidays, weekends, weather and other seasonal factors. Estimates for the most recent month are preliminary.
- ◆ Northern Virginia's Health Care & Social Assistance (HC&SA) sector created 2,400 new jobs in September, a gain that represents a one-month annualized growth rate of 20.2%. Hampton Roads also enjoyed strong employment growth in September thanks to the creation of 1,200 new jobs during the month, which translates into a 15.3% annualized growth rate. As for the Rest of Virginia, this region created 700 new HC&SA jobs. However, HC&SA employment in Richmond fell by 700 in September.
- ◆ Ambulatory Health Care Services enjoyed its eighth consecutive month of positive employment growth after having produced 1,700 new jobs in September. At the same time, Social Assistance created 1,400 new jobs, which represents a one-month annualized employment growth rate of 24.2%. Hospitals increased employment as well with the creation 700 new jobs in September. On the other hand, Nursing & Residential Care Facilities lost 200 jobs during the month.

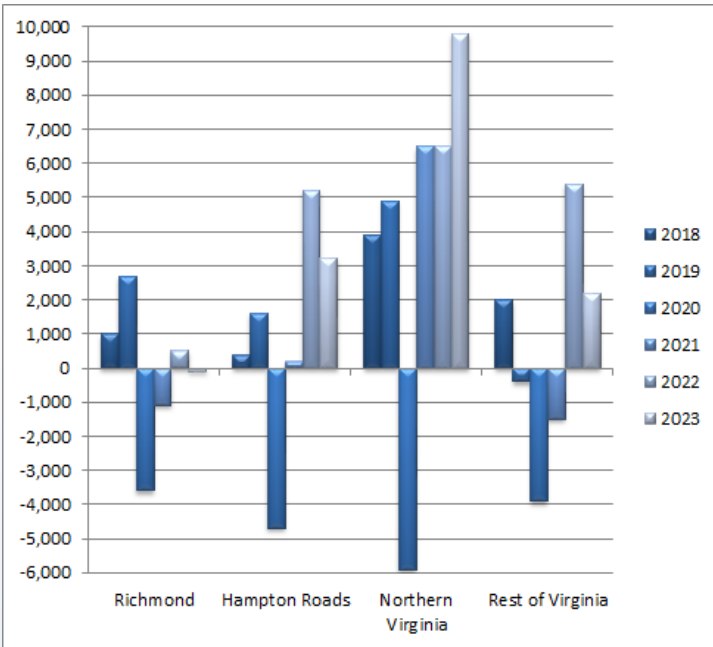
## Data in Brief

Not Seasonally Adjusted*	Employment, in Thousands				Growth Rate, Annualized		
	Sept. 2022	June 2023	Aug. 2023	Sept. 2023	12 Month	3 Month	1 Month
<b>Virginia</b>							
Total Nonfarm	4,105.1	4,167.5	4,149.6	4,156.4	1.2%	-1.1%	2.0%
Health Care & Social Assistance	462.6	475.4	479.3	482.9	4.4%	6.5%	9.4%
<b>Hampton Roads</b>							
Total Nonfarm	792.9	805.8	797.0	794.0	0.1%	-5.7%	-4.4%
Health Care & Social Assistance	96.2	99.2	100.3	101.5	5.5%	9.6%	15.3%
<b>Northern Virginia</b>							
Total Nonfarm	1,543.8	1,582.1	1,575.8	1,575.6	2.1%	-1.6%	-0.2%
Health Care & Social Assistance	147.4	152.6	155.4	157.8	7.1%	14.3%	20.2%
<b>Richmond</b>							
Total Nonfarm	700.5	713.8	713.6	715.6	2.2%	1.0%	3.4%
Health Care & Social Assistance	85.7	85.2	85.4	84.7	-1.2%	-2.3%	-9.4%
<b>Rest of Virginia</b>							
Total Nonfarm	1,067.9	1,065.8	1,063.2	1,071.2	0.3%	2.0%	9.4%
Health Care & Social Assistance	133.3	138.4	138.2	138.9	4.2%	1.5%	6.3%

Preliminary estimates are italicized

\* Seasonally adjusted data are adjusted by the Bureau of Labor Statistics to account for weather and other seasonal changes. Since the U.S. Bureau of Labor Statistics does not provide seasonally adjusted data at this level, this series uses **non**-seasonally adjusted data exclusively. Seasonal variation may account for some of the variation in time series data. When comparing data in this series to other HWDC series or other publications, it is important to note whether the data reported have been seasonally adjusted.

### Regional HC&SA Employment Growth, Level



**Figure 1: Annual & YTD Change in HC&SA Regional Employment (Not Seasonally Adjusted, Full-Year Change for 2018-2022, Year-to-Date Change for 2023).**

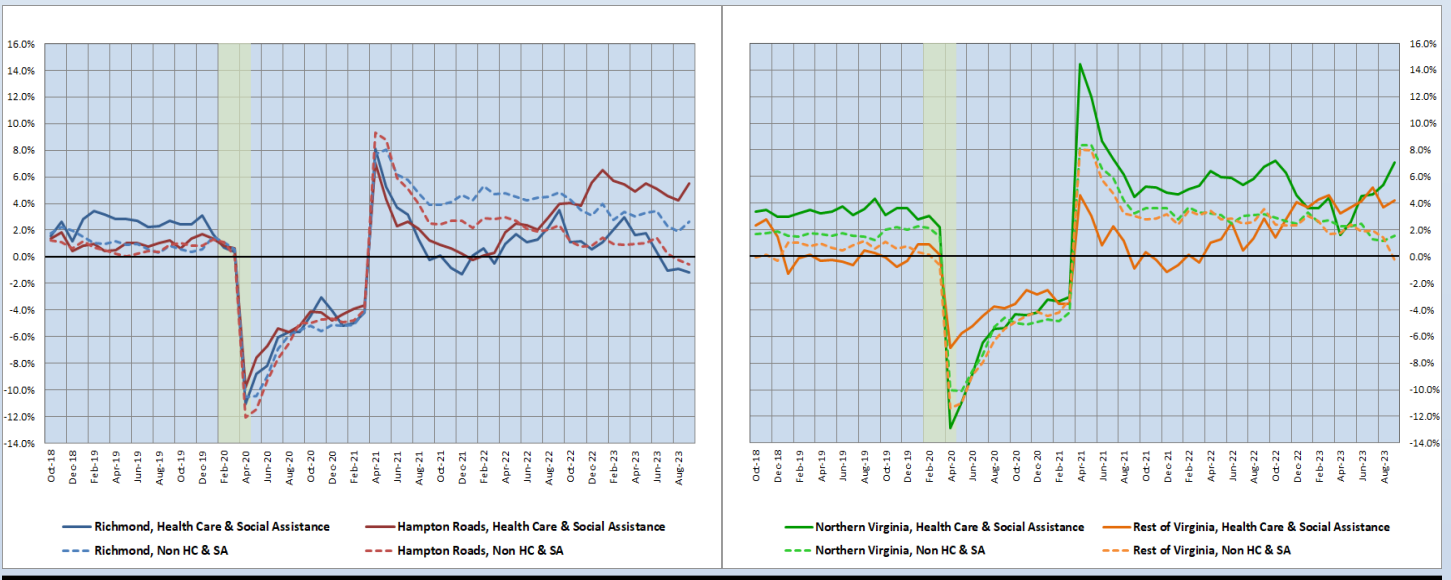
According to the preliminary data released on Friday, October 20, 2023, by the U.S. Department of Labor, Bureau of Labor Statistics, Northern Virginia continues to enjoy impressive Health Care & Social Assistance (HC&SA) employment growth. In September, Northern Virginia’s HC&SA sector created 2,400 new jobs, which translates into a 20.2% annualized employment growth rate. HC&SA employment in Northern Virginia increased by 5,200 in Q3 2023, a three-month gain that represents a 14.3% annualized growth rate.

Hampton Roads also experienced strong HC&SA employment growth during the month. In September, Hampton Roads’ HC&SA sector produced 1,200 new jobs, which represents a one-month annualized employment growth rate of 15.3%. With this gain, HC&SA employment in Hampton Roads increased by 2,300 in Q3 2023. This represents the largest quarterly employment gain in Hampton Roads’ HC&SA sector in more than two decades. Finally, the Rest of Virginia added 700 new jobs in September, the exact number of jobs lost by Richmond’s HC&SA sector during the month.

### Year-Over-Year Regional Employment Growth

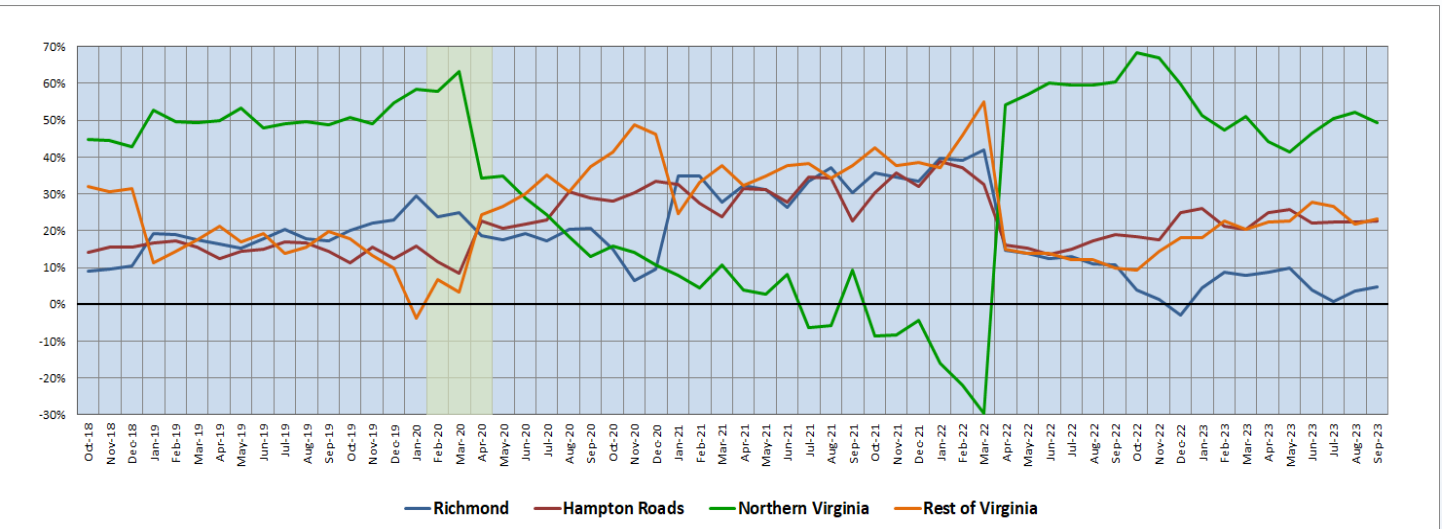
In September, Northern Virginia’s year-over-year HC&SA employment growth rate increased from 5.36% to 7.06%, thereby reaching its highest value since last October. Hampton Roads also experienced an increase to its own year-over-year HC&SA employment growth rate, which rose from 4.26% to 5.51% during the month. With this gain, Hampton Roads’ year-over-year HC&SA employment growth rate has reached its highest value since February. Meanwhile, the Rest of Virginia saw its own year-over-year HC&SA employment growth rate rebound in September from 3.68% to 4.20%. As for Richmond, its year-over-year HC&SA employment growth rate fell from -0.93% to -1.17% during the month.

**Figure 2: Year-Over-Year Employment Growth (Not Seasonally Adjusted).**



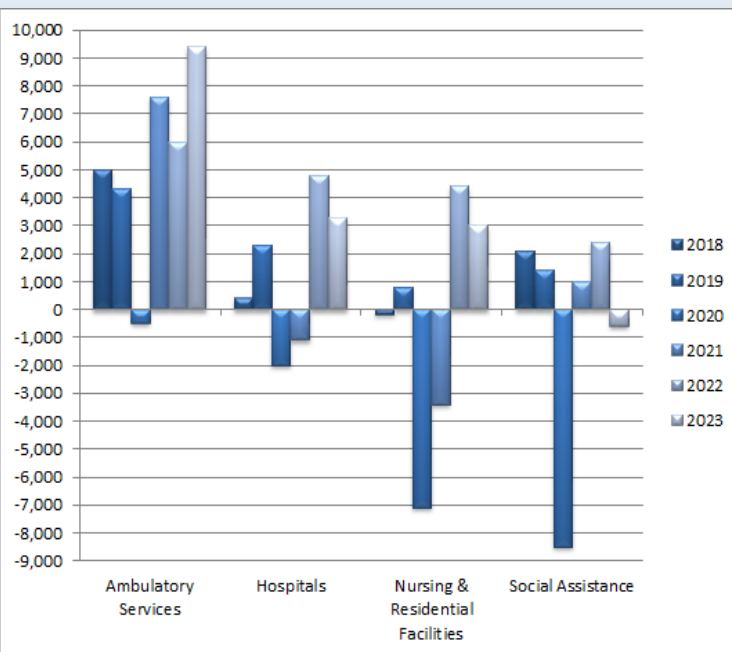
### Regional Share of 24-Month Employment Growth

**Figure 3: Regional Share of Previous 24-Month Employment Growth in Virginia’s HC&SA Sector (Not Seasonally Adjusted).**



Northern Virginia’s 24-month HC&SA employment growth share fell from 52.12% to 49.37% in September. Despite this month’s decline, Northern Virginia still retains a 24-month HC&SA employment growth share that is more than two times higher than that of the Rest of Virginia, the region that currently has the second-highest growth share in the state. The Rest of Virginia’s 24-month HC&SA employment growth share rebounded in September, rising from 21.82% to 23.31% during the month. At the same time, Hampton Roads experienced a marginal increase to its own 24-month HC&SA employment growth share, which rose from 22.48% to 22.56%. Richmond’s 24-month HC&SA employment growth share rose as well in September with an increase from 3.58% to 4.76%.

### HC&SA Subsector Employment Growth, Level



**Figure 4: Annual & YTD Change in HC&SA Subsector Employment (Not Seasonally Adjusted, Full-Year Change for 2018-2022, Year-to-Date Change for 2023).**

For the third consecutive month, Ambulatory Health Care Services produced the largest HC&SA employment gain among Virginia’s four HC&SA subsectors. In September, Ambulatory Health Care Services created 1,700 new jobs. With this gain, Ambulatory Health Care Services added a total of 5,000 jobs to the state’s economy in Q3 2023. Furthermore, this result also represents the eighth consecutive month in which employment in Ambulatory Health Care Services has increased. In total, Ambulatory Health Care Services have produced 9,400 jobs so far this year.

After having experienced three consecutive months of job losses, Social Assistance rebounded strongly in September with the creation of 1,400 new jobs during the month. Meanwhile, Hospitals experienced their fourth consecutive month of positive employment growth after having produced 700 new jobs in September. As for Nursing & Residential Care Facilities, this HC&SA subsector experienced a small decline in employment with the loss of 200 jobs in September.

### Distribution of Growth by Subsector

Not Seasonally Adjusted	Employment, in Thousands				Growth Rate, Annualized		
	Sept. 2022	June 2023	Aug. 2023	Sept. 2023	12 Month	3 Month	1 Month
<b>Virginia</b>							
Health Care & Social Assistance	462.6	475.4	479.3	482.9	4.4%	6.5%	9.4%
<i>Ambulatory Health Care Services</i>	205.5	210.5	213.8	215.5	4.9%	9.8%	10.0%
<i>Hospitals</i>	108.9	111.6	112.7	113.4	4.1%	6.6%	7.7%
<i>Nursing &amp; Residential Care Facilities</i>	71.2	74.7	75.9	75.7	6.3%	5.5%	-3.1%
<i>Social Assistance</i>	77.0	78.6	76.9	78.3	1.7%	-1.5%	24.2%
<b>Hampton Roads</b>							
Health Care & Social Assistance	96.2	99.2	100.3	101.5	5.5%	9.6%	15.3%
<i>Hospitals</i>	22.2	22.7	22.9	23.1	4.1%	7.2%	11.0%
<b>Northern Virginia</b>							
Health Care & Social Assistance	147.4	152.6	155.4	157.8	7.1%	14.3%	20.2%
<i>Ambulatory Health Care Services</i>	75.9	79.5	82.1	82.7	9.0%	17.1%	9.1%
<i>Hospitals</i>	28.2	28.8	29.1	29.3	3.9%	7.1%	8.6%

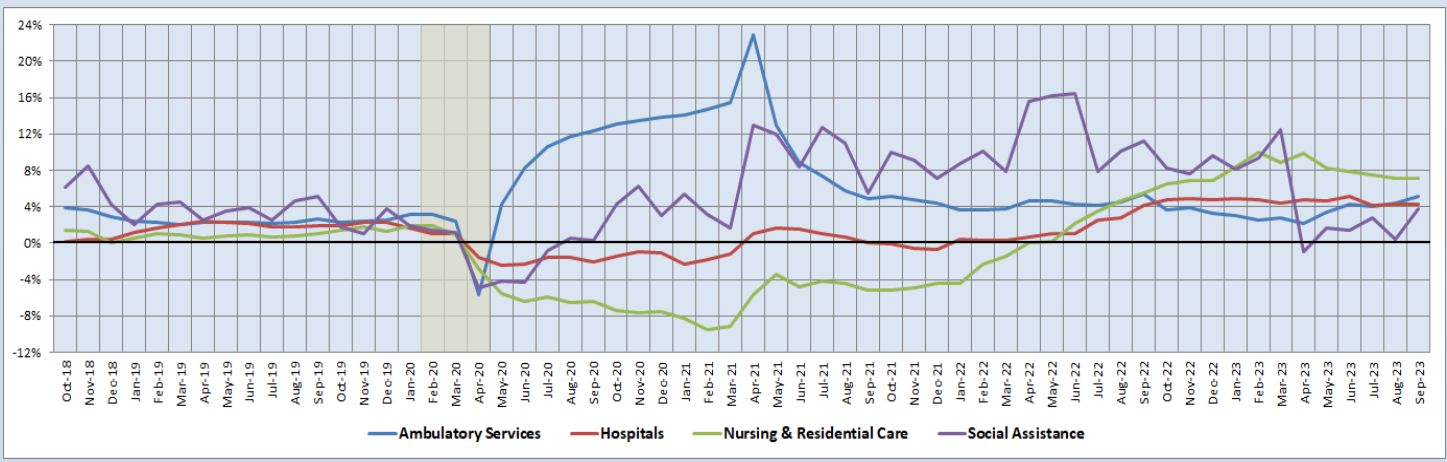
Preliminary estimates are italicized

Although long-term employment growth in Social Assistance is currently well below the overall statewide HC&SA average, this HC&SA subsector did create jobs at an impressive 24.2% annualized rate in September. Ambulatory Health Care Services also enjoyed strong job growth in September, increasing employment at a 10.0% annualized rate during the month. Ambulatory Health Care Services also enjoyed rapid job growth in Q3 2023 thanks to its three-month annualized employment growth rate of 9.8%, the highest among Virginia’s four HC&SA subsectors. As for long-term job growth, Nursing & Residential Care Facilities currently have the fastest 12-month employment growth rate in the state at 6.3%.

### 12-Month Average Employment Growth by Subsector

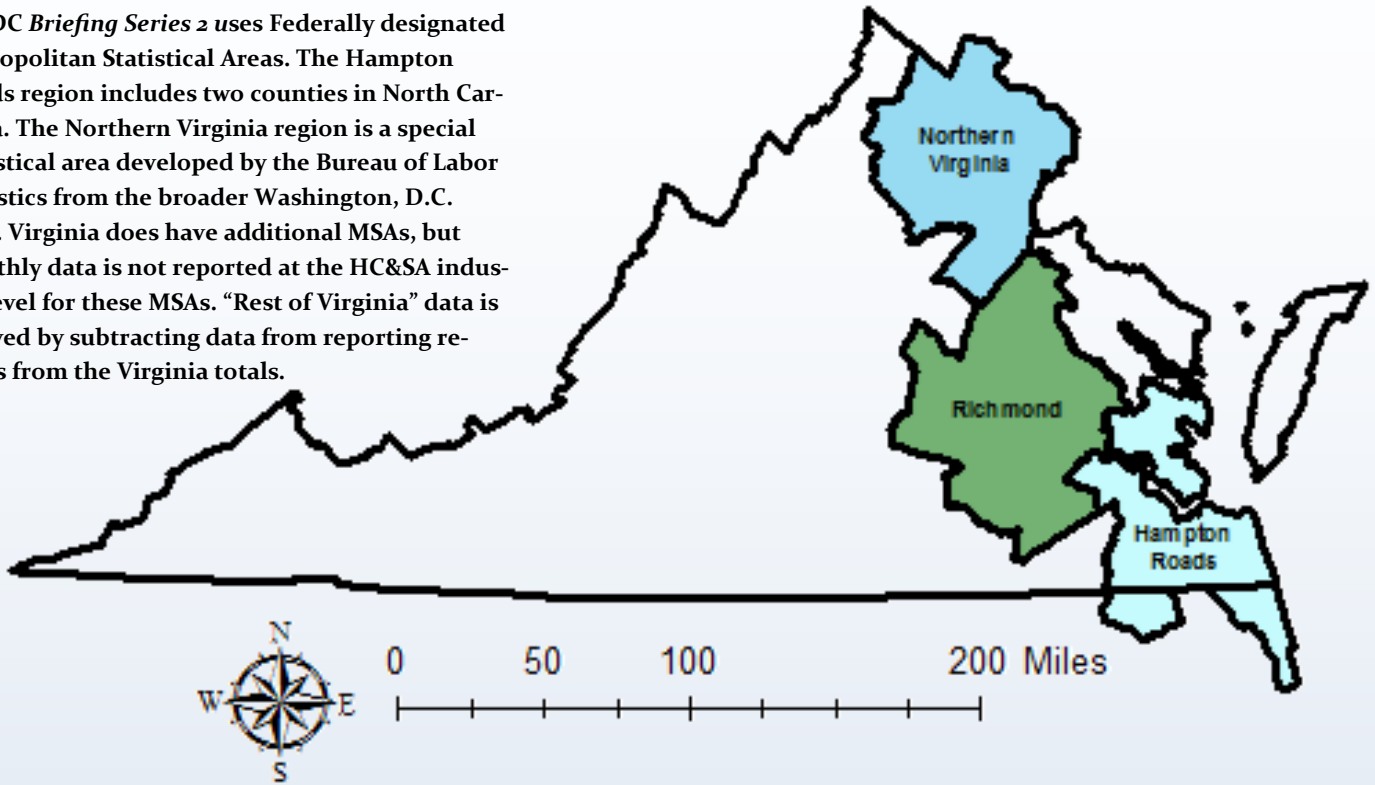
For the first time since April, Nursing & Residential Care Facilities experienced an increase to its 12-month employment growth rate moving average, which rose slightly in September from 7.14% to 7.16%. Meanwhile, Ambulatory Health Care Services saw their 12-month employment growth rate moving average reach a new year-to-date high in September after increasing from 4.41% to 5.19% during the month. At the same time, Social Assistance saw its own 12-month employment growth rate moving average jump from 0.36% to a six-month high of 3.78%. Finally, Hospitals experienced a slight decrease to its 12-month employment growth rate moving average from 4.27% to 4.24% in September.

**Figure 5: 12-Month Moving Average, HC&SA Subsector Employment Growth Rate (Not Seasonally Adjusted).**



### Region Map

HWDC *Briefing Series 2* uses Federally designated Metropolitan Statistical Areas. The Hampton Roads region includes two counties in North Carolina. The Northern Virginia region is a special statistical area developed by the Bureau of Labor Statistics from the broader Washington, D.C. MSA. Virginia does have additional MSAs, but monthly data is not reported at the HC&SA industry level for these MSAs. “Rest of Virginia” data is derived by subtracting data from reporting regions from the Virginia totals.



### Region Detail

Northern Virginia		Richmond		Hampton Roads	
<i>Northern Virginia, VA (Non-standard CES Area 94783)</i>		<i>Richmond, VA (MSA 40060)</i>		<i>Virginia Beach-Norfolk-Newport News, VA-NC (MSA 47260)</i>	
<b>Counties:</b>	<b>Cities:</b>	<b>Counties:</b>	<b>Cities:</b>	<b>Counties:</b>	<b>Cities:</b>
Arlington	Alexandria	Amelia	Colonial Heights	Gloucester	Chesapeake
Clarke	Fairfax	Caroline	Hopewell	Isle of Wight	Hampton
Culpeper	Falls Church	Charles City	Petersburg	James City	Newport News
Fairfax	Fredericksburg	Chesterfield	Richmond	Mathews	Norfolk
Fauquier	Manassas	Dinwiddie		Surry	Poquoson
Loudoun	Manassas Park	Goochland		York	Portsmouth
Prince William		Hanover			Suffolk
Rappahannock		Henrico		<i>Currituck, NC</i>	Virginia Beach
Spotsylvania		King William		<i>Gates, NC</i>	Williamsburg
Stafford		New Kent			
Warren		Powhatan			
		Prince George			
		Sussex			

Healthcare Workforce  
Data Center

Perimeter Center  
9960 Mayland Drive, Suite 300  
Henrico, VA 23233-1463

Phone: (804) 597-4213  
Fax: (804) 527-4434  
E-mail: [hwdc@dhp.virginia.gov](mailto:hwdc@dhp.virginia.gov)  
Website: [www.dhp.virginia.gov/PublicResources/HealthcareWorkforceDataCenter](http://www.dhp.virginia.gov/PublicResources/HealthcareWorkforceDataCenter)

*HWDC Staff:*

Yetty Shobo, PhD <i>Director</i>	Barbara Hodgdon, PhD <i>Deputy Director</i>
Rajana Siva, MBA <i>Data Analyst</i>	Christopher Coyle, BA <i>Research Assistant</i>

Follow us on. . .

Tumblr: <http://vahwdc.tumblr.com/>

## About the Data

Data in this report are from the U.S. Department of Labor, Bureau of Labor Statistics' Current Employment Statistics program. The CES program surveys about 143,000 businesses and government agencies monthly. Unless otherwise noted, this series uses data that are not seasonally adjusted. Seasonal variations related to weather, holidays, weekends, seasons and other predictable variations are apparent in the data. Short-term changes may be related to seasonal changes rather than underlying trends. Data from recent months are preliminary and subject to revision in future releases from the CES. Revisions will be reported in future editions of this series. Unless otherwise noted, the CES data presented in this series:

### Includes:

- ◆ Data on employed individuals drawing a paycheck (payroll employees).
- ◆ All employees, regardless of role, occupation or hours worked.
- ◆ HC&SA employees in the private sector only.
- ◆ Persons employed by health professionals in private practice.
- ◆ Both government and private sector workers in nonfarm employment data.

### Does not include:

- ◆ Self-employed workers or volunteers, including health professionals in private practice.
- ◆ HC&SA employees in the public sector (These are counted as government workers in monthly reports).
- ◆ Information on hours worked or the quality of employment.
- ◆ Government workers in HC&SA level data (Government workers, regardless of occupation and role, are classified as public sector employees).

The Department of Health Professions' Healthcare Workforce Data Center works to improve the data collection and measurement of Virginia's healthcare workforce through regular assessment of workforce supply and demand issues among the 80 professions and 350,000 practitioners licensed in Virginia by the DHP.

The HWDC collects data on Virginia's licensed health professionals through surveys completed during the online license renewal and application process. Survey results and data may be accessed on our website: [www.dhp.virginia.gov/PublicResources/HealthcareWorkforceDataCenter/](http://www.dhp.virginia.gov/PublicResources/HealthcareWorkforceDataCenter/).

The HWDC also provides a series of Virginia Healthcare Workforce Briefs based on data collected by the U.S. Department of Labor's Bureau of Labor Statistics and the U.S. Department of Commerce's Bureau of Economic Analysis.

Virginia Healthcare Workforce Briefs:

Series 1: State & National Employment (Monthly)

Series 2: Virginia Regional & Sectoral Employment (Monthly)

Series 3: Income & Compensation (Quarterly)